

THE DUBLIN ADVOCATE

Volume 12, Issue 12
Dublin, NH 03444

To Encourage and Strengthen Our Community
PUBLISHED MONTHLY SINCE AUGUST 1999

DECEMBER 2011

Celebrate the Holiday Season!

DUBLIN'S ANNUAL HOLIDAY NIGHT: DECEMBER 2

For Dublin's annual Holiday Night of Tree Lighting, Food, Community Sing, & Santa, we will all gather around the Christmas tree December 2 at 6:30 pm in the parking lot between the Fire Station and Yankee Publishing. We will sing a few songs and then move to the back of the Yankee parking lot for a bonfire.

The Advocate is again handing out song-sheets and singers from local churches and schools are invited to share their musical talent in these beloved carols.

Hot chocolate and Christmas cookies will be served and marshmallows for roasting will be circulated. So bundle up the kids, invite your neighbors, grab flashlights and gloves, and dress warmly. Join us in Dublin village and help usher in the holiday season.

NOWELL SING WE CLEAR

The Monadnock Folklore Society presents Nowell Sing We Clear on Friday, December 9, at 8 pm at the Dublin Community Church. Admission is \$15/\$12 (senior, youth & advance internet sales).

This will be the 37th touring season of



Nowell Sing We Clear with songs drawn mostly from English-language folk traditions, that tell both a version of the events and characters involved in the Christmas story and detail the customs that make up the 12 days following the return of the light at winter solstice.

While much of the singing is unaccompanied, the pageant is also stamped with the energetic dance-band sound of fiddle, button accordion, electric piano, drums, and concertina. The audience will be supplied with songsheets and encouraged to sing along. Please visit www.monadnockfolk.org for details.

COME ONE, COME ALL!

You are invited to the annual Christmas Dessert Banquet hosted by Fairwood Bible Chapel on Sunday, December 11th, at 6:30 in the evening. We welcome everyone to join us for a beautiful, relaxed celebration of the season, as we enjoy entertainment, carols, and scrumptious treats together. Bring a friend! RSVP by December 7th if possible (563-9971).

Also, everyone is welcome to join us at Fairwood Bible Chapel for our Christmas Eve service Dec. 24 at 6 pm.

DUBLIN CHRISTIAN ACADEMY AT CHRISTMAS

Christmas season is upon us and Dublin Christian Academy would like to invite you to our annual Christmas Vespers program on Friday, December 16, at 1:30 pm. Mrs. Ellen Katka has been working



with the entire student body and faculty to perform musical numbers as a little "Christmas Card" to all families and friends. Please plan to join us on December 16.

The Mikado, our school play, will have two performances this year. Please mark your calendars for December 8, at 1 pm, for our matinee performance and December 9 at 7 pm for an evening performance. The students have been working very hard under the direction of Mr. Bill Katka.

Please come and enjoy a time of entertainment. There is no charge.

HOLIDAY MUSIC AT DUBLIN COMMUNITY CHURCH

The Dublin Community Church will be celebrating the season with music from around the world, during Advent, Christmas, and New Year's. Each language and culture offers a new look at Christmas.

The Christmas Eve Service with Lessons and Carols will be held at 7 pm on December 24. All are invited to attend.

Newcomers to the choir are always welcome. Rehearsals are on Thursday evenings. Please call Barbara Summers at 563-7184 or email BKSummers50@aol.com.

Shop locally.

Support our local small businesses.

Dublin Public Library

CHILDREN'S AND FAMILY TIME

December is a busy month but you want to make sure and set some time aside to bring your children into the library. Children need a chance to sit and listen to a story, pick out a book by themselves and work at the craft table where there is always something to color and create. Our Wednesday morning Story Time continues to be popular with children and parents and this month offers a variety of winter themes. Continuing with our alphabet we are learning the letter "D". Dashing through the snow, December deer (reindeer that is), deck the halls and more decorations, dollhouses, dump trucks and drums. Please join us on Wednesdays from 9:30-10:30 am (December 7, 14, 21, and 28).

Hope you were able to join us December 1 for our Family Time. We offered a program from 5-7 pm with stories, crafts and refreshments. Watch for notices about our next program.

SUNDHILL FARM

Norman Sundstrom Jr & Son

26 Chesham Rd
PO Box 383
Dublin NH 03444
Phone 603-563-7736
Cell 603-398-6838
E-mail sundhill@gmail.com

Landscaping/Lawn Care
Year Round Estate Maintenance
Snow Plowing/Sanding Res/Comm

FREE ESTIMATES

The library has e-readers to lend. They can circulate for two (2) weeks. These can be used to download books available from Overdrive downloadable books. There is no fee involved – one just goes to the site and if the book is available it can be downloaded for two (2) weeks. Further information will be found at the library.

BOOK TALK BY BETTY

Thrillers are not one of my favorite reads. So James Patterson is not an author I usually read (with a few exceptions). When the book "Christmas Wedding" came out I decided to see what Mr. Patterson was going to do with that subject. What he did was write a great story just perfect for the Christmas season.

Archer Mayor has a hit with his newest book "Tag Man." The story line made me wonder if anyone was wandering around in the house while I slept. It was a good read.

DVDS

Cars 2
Water for Elephants
Snow Flower and the Secret Fan
Atlas Shrugged Part I

CDS

Night Strangers
Christmas Wedding
The Litigators
The Affair

Watch for the magazine giveaway the end of December.

Friends of the DPL

The Friends of the Dublin Public Library will be having its annual book sale on February 18th, 2012, so we welcome books. Books!!! Please let them not have mouse poops or spider webs, and please be advised that the cut-off date for receiving books will be the end of the first week of February. Let the spring cleaning begin! Let your old books turn over a new leaf!



Two great gift ideas!

from the Dublin Historical Society

Available at the Archives, on the web, at Dublin General and Carr's.



10 NOTE CARDS

Featuring Five Paintings by Abbott H. Thayer with envelopes for \$10



MONADNOCK SUMMER,
The Architectural Legacy of
Dublin, New Hampshire
by William Morgan



Limited hardcover edition with extended index: \$55

www.dublinhistory.org • 563-8545

In **Night Sky**, Edie Clark reads selections from *The View from Mary's Farm*, her book of essays from the pages of Yankee magazine.

NIGHT SKY BY EDIE CLARK

CONTENTS: Night Sky / The Winter of a Thousand Springs / Fruitcake Weather / Santa's Home / Two Springs / From the Ashes / Peace Log / Making Hay / Dark Waters / Under the Exploding Sky / Sneak Attack / Something Big Passed By / To Save a Sheep / Raging Bull / Jazz Night. Musical Interludes by Gordon Peery and friends

Night Sky CD, \$15.00 plus \$4 shipping. To order by credit card online, go to www.edieclark.com. Or send a check made out to Edie Clark to Mary's Farm, PO Box 112, Dublin NH 03444.

Monadnock United Way Campaign in Town

By Bill Goodwin

The Monadnock United Way (MUW) kicked off the 2011-2012 campaign on September 8th at the Colonial Theater in Keene. Through a very rigorous allocations process, it was determined that we needed to raise a total of \$2,339,067 to meet the MUW commitment to the agency programs in the Monadnock region. Here in Dublin, our goal was \$7,708.

I am pleased to announce that effective November 15th, we have raised \$8,039 or 104% of our goal, and still have businesses that may come through with a donation.

I would like to recognize and thank the extraordinary effort and generosity of the employees and management of Yankee Publishing who raised a total of \$6,234.

I also want to thank my team of Barbara Summers, Margaret Gurney and Nancy Jackson for making the campaign calls on many of the other businesses in town.

The following is a listing of the Dublin businesses that contributed:

Yankee Publishing Inc., Dublin School, Simpson Landscape Company, The Friendly Farm, MEI Search Consultants, Life Safety Fire Protection, Michael Walker Inc, Niemela Design, Peter Pap Oriental Rugs, Dublin Health & Benefit Group, Knights Auto Body, DelRossi's Restaurant, Gammy Bird Consulting, She's So Fine Hair Design, Harvest Thyme Herbs, Life Safety Fire Protection employees, Francis McKenna Woodworking, The Countryhouse Corner, Farmer John's Plot, Dublin General Store, Hedge House, Morning Star Maple, New York Life Insurance Rep; and Begley Plumbing and Heating.

MUW agencies provided help 451 times to Dublin residents in 2010. Usage will likely be higher this year and next year because of the economic times. About 90% of the funds received go toward MUW agency programming.

For information about the Monadnock United Way, we invite you to go to their website at www.MUW.org.

If you have not made your donation this year, but wish to, it is not too late. Contact Bill Goodwin at 563-7184.

BILL GOODWIN is Team Captain for the Monadnock United Way campaign in Dublin.

Notecards Benefit DHS

The Dublin Historical Society (DHS) has a new fundraiser. Instead of the usual calendar this year, it has produced a handsome boxed set of notecards by Dublin artist Abbott Handerson Thayer. The set of 10 notecards and envelopes (two each of five images) include one of Thayer's angels, an example of protective coloration with Blue Jays, a scene of Dublin Lake, a winter scene of Mount Monadnock and a still life.

When asked why the change away from the successful Monadnock calendar from two years ago, Sarah Bauhan, the DHS vice president, said "We decided to go with something completely different that was affordable and wouldn't have a sell-by date, but that would have the same appeal."

The cards are available in the Archives (located behind the library), Dublin General Store, Carr's Store, The Toadstool Bookshop and online at the DHS website: www.dublinhistory.org. Proceeds benefit the Dublin Historical Society.

Hike Beech Hill Trails

Join others on Sunday, December 4, from 10 am to 1 pm at the Beech Hill conservation easement, to hike and explore.

The Beech Hill ridgeline is a great place to enjoy conserved land and views. This moderately strenuous hike—no bushwhacking—will introduce you to the network of trails now open to the public.

Meet at the Dublin Public Library, Main St. (Rte. 101), at 10 am to carpool. Monadnock Conservancy and Harris Center are co-sponsors.

Pre-register with Emily Hague: email Emily@MonadnockConservancy.org or call 357-0600.

She's So Fine Hair Design

Men, Women & Children

A Full Service Salon



She's So Fine Hair Design

1533 Main St.
Dublin, NH 03444
@ CountryHouse Cafe

603-563-7166
603-731-9358
mzzfrzz@aol.com

Moose Maple Nursery

*Balsam and Fraser Christmas Trees
Handmade Wreaths, Roping and Gifts*

Open daily, 10 am 'til dark or by chance
42 Brush Brook Rd, (Rte 137N), Dublin, NH
563-8054 or leave message at **563-8284**



Oh My Dog!
Doggie Spa & Boutique

Full Service Spa • Certified Dog Groomer
Call Today for An Appointment

We carry
organic pet
products!

1281 Main Street, Dublin NH 03444 • 603-563-7989

Hours: Tuesday, Thursday, Saturday, Sunday from 9:00am-6:00pm

A New Place to Meet

By Mary Loftis

Andy Freeman thought about a new addition to the Dublin General Store for a long time, in fact ever since he and Michelle purchased the store ten years ago. The beautiful new space on the street side of the store, built this past summer and furnished over the past few months, reveals the careful planning and attention to detail the Freemans are known for.

Personally, I think our General Store is the best one in the Monadnock region! Think about the warm greeting we all receive for just walking in the door. Think about scones and coffee, Saturday donut holes, lunch specials, pizza Thursdays, fish Fridays, festive beer tastings. And then there's the way the place looks: each change the Freemans have accomplished over the years has improved the functionality of the store while remaining sensitive to the historical quality of the building. The new dining / meeting area fits the architecture of the building so well that some people don't even notice it! The interior features bead-board paneling and ceiling and the store's hallmark green, red and pale yellow color scheme. Along with the sit-down dining area, the store now has an ADA-compliant public bathroom.

Andy himself designed the space and relied on local talent to make it a reality. Greg Pease's careful carpentry is evident inside



Owners Michelle and Andy Freeman take a quick moment in the new eat-in area at Dublin General Store.

and out. Francis McKenna created a beautiful hand-planed wide pine table, which is surrounded by vintage stools provided by Tom Seaver. Smaller tables are flanked by soft seating repurposed from a medical center. A new addition to the space is a 13-foot pew from Our Lady of the Snows, which will adjoin a series of tables along the inside wall. Andy said his idea was to create a variety of seating opportunities, some of which will encourage "unrelated" people to sit together and converse while they eat. Mounted to the wall is a large, flat-screen TV, which is available for sports events or ESPN news. It's not on continuously, however, because Andy maintains that "Quiet is okay, too!"

During the day, the south-facing room is flooded with sunlight and the lunch crowd spreads out their sandwiches; in the evening, folks come in for a light supper. Come winter, it will be the perfect spot to get out of the weather, meet friends and neighbors and enjoy some good "DubGen" fare.

MARY LOFTIS is on the staff of The Dublin Advocate.



Hearing loss affects one in ten people in America

Even a slight loss can make you feel embarrassed, frustrated, isolated. But hearing loss is treatable, and specialized care is available right here in our own community. Highly experienced specialists from Crotched Mountain Audiology Services are experts in helping people of all ages improve hearing function. And today's nearly invisible devices let you hear naturally and clearly—so you can fully participate in life again.



CROTCHED
MOUNTAIN
AUDIOLOGY SERVICES

PETERBOROUGH

MCH Bond Wellness Center

GREENFIELD

Crotched Mountain

CALL FOR AN APPOINTMENT • 603.547.3311, EXT 1660

Bring this ad in for a free herb dip as a gift for you!

Gift Barn

open
9:00 - 5:00
daily
thru
December 31st

Some unique gifts by local artists include bracelets by Tom Marriner, fabric art by Mandy Bradford, bottlecap earrings by Holly (Bradford), felt art by Diane Sykeny, folk art santas by Jeanne Judge, pastel paintings by Maryann Mullett, wood carvings by Ron Devens, uniquely embellished pocketbooks and yoga bags by Lin Worthington, nature inspired garden accents by Sarah Sangermano and more!

HARVEST THYME HERBS

91 Dooe Road, Dublin 563-7032

Best Things in Life Still Free

Jim Rodrigues estimates 300 to 400 people used all 2 kilometers of the trails he built and groomed last winter for cross-country skiing next to his house, at the end of the field just off Route 101 and Monument Road.



An avid skier himself, Jim is event manager of the New England Nordic Ski Association, which keeps him busy organizing races every snowy weekend. But during the week, he takes time to groom the trails himself on the Yankee land, with permission of course, next to his home.

Jim grooms a commercial grade swath about 12 to 14 feet wide after every snow, and explains two of the loops connect up on Yankee land and can take you to the elementary school. He even clears enough parking places for 5 to 6 cars. "Sometimes I'll hop on and ski for an hour over my lunch break," says Jim, who wants to get the word out that it's for sharing with others.

He'd like to track visits, so Jim plans a bulletin board, sharing a few words on course etiquette. For example, snowshoers are welcome, but please do not walk in the groomed ski tracks. Jim and his wife, Dana Wood, have dogs but leave them at home when they ski and they hope you do as well – skiers and dogs do not mix.

All in all, it's a great place to bring the family for a little winter outing. Check out the Yankee blackboard for current trail information. The trails are also open for walking in non-snow months – and dogs are welcome during that time.

Help Wanted: Committee Member

Dublin's Recycling Committee is looking for members. We're about to be three members short (people moving away or taking new jobs elsewhere). Remaining members include Tom Kennedy, Larry Foley and Ed Germain. Our mission is to identify and recommend the most cost-effective and environmentally responsible solutions to Dublin's current and future recycling and solid waste needs. Normally we meet on the first Thursday morning each month—although we can change the meeting time to accommodate new members. If you would like to join us, please contact Sherry Miller at Town Hall: 563-8544.

The opinions expressed in these pages of the *Advocate* are solely those of the author.

Opportunities for Community Center

There is growing enthusiasm for the Dublin Community Center, and the opportunities it will offer Dublin and area residents in the near future!

Margaret Nelson, Dublin resident and director of The River Center in Peterborough, is looking forward to working collaboratively with the Community Center, and bringing some of The River Center's programs to Dublin.

The River Center currently offers off-site programs in Jaffrey and New Ipswich, such as their parenting programs. "I'm excited about having a Community Center, as a resident, and as the director of The River Center," said Margaret. "There is such a need for a venue to bring people together, the younger, the older, and the in-betweens... This will add a spirit of community to Dublin, as well as provide a place for needed programs."

The River Center, located on Concord Street in Peterborough, provides needed programs for residents in the surrounding towns, including Dublin, such as parenting programs, babysitting, computer literacy, tax planning assistance, food preparation, and numerous other services. You may visit www.rivercenter.us for details.

Here in town, there remains much work to be done on the community building before these programs can begin. If you haven't already sent your donation, please be as generous as you can. Your donation is completely deductible. You can mail it to Dublin Community Center, PO Box 497, Dublin, NH, 03444.

In the spirit of community, giving, and thankfulness, the Board of Directors extends a grateful thank you for the generosity of the many donors who have already contributed to the Community Center, and we wish everyone a joyful, healthy Christmas season, and a Happy New Year!

Rent Movies & Games in Keene & return to Carr's Store!

Or rent at Carr's from the 100s of movies we stock there.

- ☐ **The Largest** video rental library 42,000+ Movies, Video Games & Blu-Rays!
- ☐ We get movies from Universal Studios, Warner Bros & 20th Century Fox a **Month** before Netflix & Redbox (that's 1/2 of all New Releases)!
- ☐ 98% of our movies & games rent for **7 Days!**
- ☐ Check out our newest **Subscription Plan:** Have one movie, game or Blu-ray out **All** the time - swap for a new one as often as you want for free at our Keene store -never any late fees! - only \$19.95/mo!

☐ **Free Membership!**

Video Headquarters

Where The Movies Come From - FIRST!

JC Penney Shopping Plz, Keene - 357-5570
hours: Sun-Thur 10AM-10PM, Fri & Sat 10AM-11PM
www.videoheadquarters.com

News from the Dublin Consolidated School

By May Clark

Between the Veteran's Day holiday and Thanksgiving, November is a short month. We pack it full at DCS, though! Thank goodness we didn't lose any school days after the 24-inch snowstorm the day before Halloween, as many other school districts did.

We had our NHDI residency the week of Veteran's Day, and capped a wonderful week of dancing with a performance for families that was inspiring. It is one of our favorite weeks of the year, when everyone gets to dance every day, and smiles are especially contagious. Lisa Cook has been our dance instructor for the past few years, and her energy is something to behold.

At this writing, we have not yet eaten our Harvest Lunch, prepared for children and their families on the 17th by Mrs. Lorrie, our very own chef and lunch lady extraordinaire. We know it will be delicious, as always. And, by the time you read this, we will have had our fall parent teacher conferences, as well as a workshop day for teachers.

This month brings our annual Holiday Shop, prepared and run by our PTO members and lots of volunteer parents. It's an event not to be missed. Our winter concert is scheduled for Tuesday evening, at 6 pm, on Dec. 20, with a snow date of the next night. Everyone is welcome, especially because we expect a visit from our bearded friend in a red suit!

It seems there is no such thing as "down time" at DCS these days, and we love visitors coming to join in the fun. Just call 563-8332 or email (mclark@conval.edu) first!

MAY CLARK is Teaching Principal at DCS.

Blizzard Bags

By Mary Loftis

Those of you who have children in the ConVal School District have recently received information about "Blizzard Bags." When I first heard the term at an Education Committee meeting, I envisioned something a Saint Bernard dog might deliver along with the brandy to someone lost in a snowdrift. Well, that's wrong. In fact, as Assistant Superintendent Kimberly Saunders explained, Blizzard Bags for at-home work provide a way kids can continue learning even if school is cancelled due to weather / emergency conditions. The State of New Hampshire Department of Education affords the opportunity to "count" up to five days, which would otherwise have to be made up in June.

If they have Internet access, students of all grade levels can access and complete their work online. Teachers will be available through email for questions and assistance during specific hours of the day. Otherwise, students will have the option to complete an actual "bag" of work that they take home from school. This will not be "busy work," but engaging lessons directly related to the current curriculum. The Department of Education requires a threshold of 80% district participation in order for the day to "count."

Our district extends far and wide and encompasses many challenging back roads which must be factored in when a school / no school decision is being made. Roads may be passable in Peterborough but not in the hinterlands of Temple or Dublin – and yet a district-wide decision must be made. The Blizzard Bag opportunity for at-home work will reduce disruptions to students' educational progress and reduce the number of those tiresome June make-up days.

Here are some Blizzard Bag FAQs:

Q: How do I know if it is a Blizzard Bag Day or just a No School Day?

A: The decision will be made at the SAU level and families will be notified via the AlertNow system.

Q: Is every snow day going to be a Blizzard Bag Day?

A: No. This NH Department of Education decision has been granted for a maximum of five days.

Q: Is completion of the assignment mandatory?

A: Yes. The assignment must be completed either online or via the Blizzard Bag component. Extra completion time may be granted by teachers.

Q: When is the assignment due?

A: Assignments will be due the following school day.

Q: What if there is no electricity?

A: If there is an obvious no-power situation, it will not be a Blizzard Bag Day. If power is lost during the day and it has already been deemed a Blizzard Bag Day, students should use the hard copies of assignments sent home with them.

Q: Do my kids have to do this rather than playing outside on snow days?

A: Yes. The assignments are mandatory, and if students do not complete them, they will be marked absent for the day. The NH Department of Education requires 80% participation for the day to count as a school day.

Q: Are teachers going to be available to students when they are working?

A: Yes. All teachers are expected to be available online during regular school hours.

MARY LOFTIS is Dublin's representative to the ConVal school board of SAU 1.

La Leche League Meets at Town Hall

Breastfeeding or considering it? La Leche League meetings emphasize the joys of breastfeeding while they inform and encourage mothers. LLL offers mother-to-mother help, has a lending library, and offers 24-hour phone help for breastfeeding problems and questions. LLL of the Monadnock Region meets every 2nd

Wednesday of the month at 7:00 pm at the Dublin Town Hall (downstairs). Mothers with their nursing babies and mothers-to-be are welcome.

For more information, and meetings in other towns, please call Jennifer at (603) 933-3862.

Responsible college student

available for **BABYSITTING** over winter break and summer. Certified in CPR and first aid; an America Reads tutor. References. Contact Emily Mosher at (603) 731-2674.

Dublin School Update

By Brad Bates

On October 30th a group of students and faculty had a glorious morning skiing and snowboarding through 30 inches of snow on our new ski area. When I got home later that day I scanned a list of western ski areas that opened their winter seasons early and noticed that for one day, Dublin, NH, had the deepest snow base in the nation. It has been that kind of fall at Dublin School as we enter our 76th year of educating young people from around the world.

While last year we turned to our past to celebrate an important anniversary in the school's history, this year our focus rests firmly on the present and future. At the bottom of our ski slope you will find a brand new Mews (named Mary's Mews after Colin Sistare's beloved grandmother) that is currently home to a beautiful red tail hawk on loan to new English teacher and resident falconer Henry Walters. Henry hopes to catch a juvenile male hawk this fall before the permanent snows arrive.

Just below the mews we are over halfway through construction of a seven thousand square foot academic, visual arts and student commons building. Carl Von Mertens and Andy Hungerford have taken the lead on that project under the watchful guidance of local trustees Bill Barker, Peter Imhoff, and George Foote. Once the building is completed, we will tear up the pavement in the middle of the campus, plant grass in its place to expand the quad, and build a courtyard between the new building and the Lehmann House. Our new access road from the north will make our campus safer and more pedestrian friendly by removing delivery vehicle traffic from the middle of campus.

Music is flowing from every nook and cranny on campus with the arrival of music teacher and composer Mario Flores. Mario has developed a number of ensembles including a jazz and rock combo, a small orchestral group, a chorus, an advanced music lab and a number of rock groups with the help of math teacher Sam Peyton Levine '05 and Dean of Students Eric Nemitz.

Veteran educators Bill and Shelly Farrell have joined our faculty this year and have started a highly successful mountain-bike team to take full advantage of our extensive trail system and the beautiful country roads in the area. We recently hosted a large league



race on campus and were fortunate to have local Olympic bike veteran John Allis serve as official starter. Bill and Shelly will also coach our growing snow sports program as they work to foster an endurance sports culture on our campus.

Lucy Shonk is working with area residents to create an informal lecture series on campus that will be open to the public. We hope to include our new Perkin Observatory in one of the earlier lectures this winter. Since opening

the observatory is weather dependent, anyone interested in viewing the stars at the observatory can now follow Perkin Observatory Director Jonathan Weis on Twitter at DS_Observatory or by checking our home page at www.dublinschool.org.

We hope to see many town residents on our campus this winter for our numerous upcoming events.

BRAD BATES has served as Head of School for Dublin School since 2008.

Photo by Kerry Navedo 1/4



\$5.00 OFF

Your purchase of \$25 or more
in Café and/or gift shop

COUNTRYHOUSE CORNER



- Soups •
- Paninis •
- Treats •
- Cocoa •

- Gifts •
- Garden •
- Child •
- Cards •

Enjoy our
free WIFI

Espresso Cafe • Gifts

563-7090

1533 Main St. Dublin

Good through December 31st.
One per customer, per purchase,
per visit. No duplicates.



Harrisville Children's Center

For children 6 weeks to 6 years

Where love, knowledge, and respect come together for
the healthy development of the child



Located in the heart of
historic Harrisville
We welcome visits!

A Monadnock United Way Agency

www.HarrisvilleChildrensCenter.org

(603) 827-3905

Cindy and Mitch Thomashow: Teaching and Living the Sustainable Life

By Ramona Branch

Mitch Thomashow has been leading and advocating for living the sustainable life for over 35 years. He says that his parents taught him to think about social issues and to give back to the community. "I grew up in the interdisciplinary '60s and wanted to explore the beautiful planet that we live in," he explains.

Mitch moved to Dublin in 1977 from Northfield, MA, to help build the Environmental Studies Program at Antioch University in Keene. There were ten students in the fledgling program. He spent much of his time recruiting new students and hiring faculty for the first two years. In 1979 he became chair of the growing department. For the next 30 years Mitch worked to build the Antioch program, one of the most respected Environmental Studies programs in the country. (Note: Environmental Studies are currently transitioning into Sustainability.)

In 2005, Mitch became president of Unity College in Unity, Maine. The college is known as America's Environmental College and provides students with a liberal arts education that emphasizes the environment and natural resources. His mission was to expand sustainability at the college. One of the most dramatic outcomes was the planning and implementation of Unity



PROFILE

The Thomashows have lived in Dublin since 1979 with five years spent at Unity College in Unity, Maine.

Books authored by Mitch:

"Why People Choose an Environmental Way of Life"
 "Bringing the Biosphere Home"
 "New Elements of Sustainable Culture"

Two children: Jessica, 30, a third grade teacher in Seattle; Jake, 27, an artist in Tasmania.

House, an energy-efficient environmentally friendly house designed for a net-zero lifestyle. (The house produces as much energy as it consumes.) Unity House was designed with a twofold purpose – home of the college president and an education tool for environmental students.

The Thomashows have returned to Dublin and Mitch is now a consultant with Second Nature Organization. His work consists of educating university presidents in how to build and implement sustainability measures at their institutions.

Cindy Thomashow shares her husband's passion and commitment to sustainability. She has an MA in Environmental Studies and an MA in Curriculum and Supervision and ran the Environmental Education component of the Environmental Studies program at Antioch. Now she is Education Manager for AASHE, the Association for the Advancement of Sustainability in Higher Education.

RAMONA BRANCH is a freelance writer and lives in Dublin. She is on the staff the Advocate, and sings with Animaterra.



Hammonds Move to Cape

Dick and Alice Hammond say their goodbyes to Dublin as they prepare to move to the small town of Yarmouthport on the Cape. They own a condo there, take yoga classes at the Senior Center, and walk on the beach everyday. "It keeps us busy," Alice explained. They will have several family members nearby, some of whom live there year-round. We will miss them.

Sign Up for Free Emergency Alerts

By Amanda N. Gaspard

All Dublin residents are encouraged to sign up to receive free emergency alerts from the Greater Monadnock Public Health Network (GMPHN). The GMPHN uses a system called Nixle, which allows direct communication with people who sign up to receive alerts via text message and/or email. Nixle, a trusted entity endorsed by the National Law Enforcement Telecommunications System, the Council of State Governments, the FBI, etc., is a free service (however standard text messaging rates do apply).

To sign up for text message alerts, simply text the word GMPHN to 888777.

If you want to receive both emails and text message alerts, you can register securely at no charge by visiting www.nixle.com. Click on "Sign Up Free!" and go through the simple steps to register. Once you create an account, you may select additional zip codes if you want to receive emergency alerts from other municipalities or states.

You can also view GMPHN alerts online at: <http://local.nixle.com/greater-m Monadnock-public-health-network/>.

AMANDA N. GASPARD, MPH, CHEP, is Emergency Preparedness Coordinator and Regional SNS Coordinator for the Greater Monadnock Public Health Network.

Home Briefly, with Dog

By Laura Tuller

I loved growing up in Dublin, but when I applied to college, I was ready to leave New England. Finished with my degree in Pennsylvania, I was ready to move somewhere warmer. Finishing my year of AmeriCorps service in Virginia, I was ready for a new country. In August 2010, I traveled to Taipei, Taiwan, and called it home for the next year.

During the week, I studied Chinese by morning and taught English at night. Most weekends, my friends and I ventured to different parts of the island in an effort to get out of the city, explore different landscapes, and spot as many wild monkeys as possible. One Sunday in June we took an early train to a small oceanside town on the eastern coast of Taiwan. Our plan was to walk approximately 15 miles from one town to another, and return to Taipei by train. The hike was long and hot, but not difficult, and punctuated by charming gazebos with breathtaking ocean views on one side, and herds of water buffalo on the other.

Midway through our journey we broke for lunch at a scenic overlook that had a road leading up to it so less adventurous folks could enjoy the view without having to exert themselves in the hot Taiwanese sun. When we arrived there was a large crowd of tourists, several dogs, and even a surly looking Siamese cat who had been schlepped in a backpack by a determined owner. As we sat down to our picnic we noticed a black puppy playing with a larger dog nearby. We assumed they both had owners, and thought nothing of engaging them in play. As we finished our lunch the clouds rolled in, and the view was obscured by the fog. Within moments nearly everyone else was gone, except for the puppy.

She didn't look raggedy enough to be a street dog, so we began asking the few remaining hikers if she belonged to them. Every time we inquired "Is this your dog?" they would smile knowingly and respond with "No, it's your dog." We decided to stop encouraging her, hoping that she would stay on the mountain and reunite with her owners but as we soldiered on through the fog, she trotted beside us, undeterred.



Seven miles later we had named her Stella, and our friend Dustin had volunteered to take her home. Feeling guilty that we had unintentionally lured such a good dog off the trail and into a town with a busy road, we made our way to the train station, knowing we would have to take her on as a stowaway. She seemed to understand that she was illicit cargo, hiding quietly under the seat the entire time. We reached Taipei, and Dustin made his way home with the puppy in his arms.

The next day we awoke to a startling message which said that Dustin's roommates had rejected the idea of having a dog, and that he had taken her to the city animal shelter. We did a bit of research and discovered that this particular shelter killed 1000 dogs per month. Horrified by the prospect of such a beautiful and gregarious dog being sent to death row because of us, my boyfriend Alex and I rushed to claim her. The shelter clerk told us that we could look through all of the dogs, and if we spot-

ted her, take her home. We walked from room to room, peering into cages crammed full of barking, panting, pathetic looking animals. Finally, we found her, wiggling with excitement.

As it turned out, those people on the trail were right: she was ours. We took her home, created a makeshift dog carrier, and tried to fatten her up a bit. Though we attempted find her a suitable home, everyone with whom we spoke said one of two things: 1) at 26 pounds, she was too big, or 2) she was bad luck because she had white on her feet (an ancient Chinese belief related to the color white symbolizing death). As far as we were concerned, she was perfect, and we couldn't let her go. As we made plans to return to the U.S., we researched how we could bring her on the plane. As it turned out, all she needed was a rabies shot and a health check within ten days of our trip to be admitted. China Airlines reported that she would be counted as an extra piece of baggage, and that she would come out on the other end with golf clubs and bicycles.

I can't vouch for what kind of ruckus she was raising in pressurized cargo, but she arrived on U.S. soil unscathed. Needless to say, she loves Dublin, and every chipmunk, squirrel and rabbit that calls it home. Though my plan is to eventually bring her to the west coast, I feel a little guilty about the prospect of taking her away from such canine paradise. However, her little body is only covered with a thin coat of fur, so this winter might change her mind.

LAURA TULLER graduated from ConVal in 2005, and is making plans for her next adventure.

Frost Heaves at Players

The hit comedy show "Frost Heaves" returns to the Peterborough Players on December 9-11 with all-new holiday nonsense including Christmas time at the swap shed.

Performances are Friday, Saturday, and Sunday, December 9, 10 and 11 at 7:30 pm, with a matinee on Dec. 11 at 2 pm, at the Peterborough Players theatre. Tickets are \$15 general admission, available at the door, the Toadstool and Steele's in Peterborough, and online at frostheaves.com, or call 525-3391 for information.



Dave Nelson, Kathy Manfre, Ken Sheldon and Beth Signoretti are reluctant Christmas tree lights at Frost Heaves.

Join the Crowd

By Ben Cerroni

Whether we would like to admit it or not, we have just entered into a business environment that does not allow a small business to prosper without a website. And this isn't just a sales pitch coming from someone who builds websites; this is coming from someone who has been a close observer and participant in the recent integration of technology into the small business equation.

The Yellow Pages is no longer the go-to source for finding a product or service in the area: Google is. The number of people with access to the Internet has exploded in the past decade and shows no sign of slowing down. These days, if a person wants to find a business there is a very good chance he or she will just pull up an Internet search engine and instantly receive an organized list of businesses that offer what they are looking for. From there, the inquiring customer can link to a website to find information on a business, check its hours of operation and even print directions to the business – all without leaving their computer. If your business isn't showing up in that list of business results because you don't have a website, you are failing to capture the ever-increasing number of prospective customers using the Internet to find what they are looking for.

Another reason to get your business online is the recent boom of the Smartphone. By the end of this year, more than 50% of all mobile phones will have access to the Internet through their Smartphone capabilities. And these aren't basic capabilities to just check email. These phones (led by the iPhone and Android phone) are powerful mini-computers with almost the exact same capabilities of a desktop or laptop computer. If a prospective customer is out

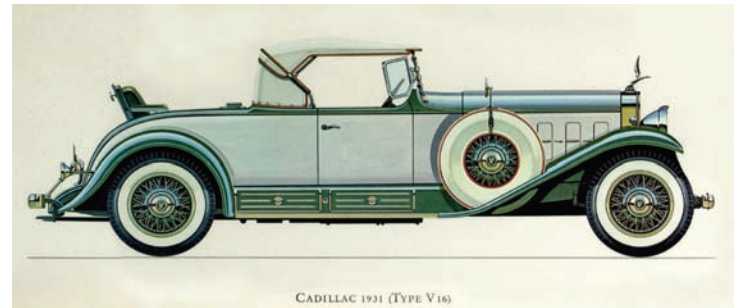
and about and looking for a cup of coffee, gas station or restaurant, it is now common practice to take out his or her Smartphone and search the area for a business with the desired offerings.

If your business isn't online yet, start thinking about whether a website could, in any way, benefit your business. If there is a chance it might, consider getting your business online. Dublin has a wealth of great businesses and there has never been a better time to share them with the world!

BEN CERRONI is a partner in GranitePeak Web Solutions and is on the staff of the Advocate.

Peter's Pondering

By Peter Hewitt



CADILLAC 1931 (TYPE V 16)

Cars all seem to look the same nowadays.

Fords, Toyotas, Chevies – even Cadillacs – have a sort of shapeless, inflated appearance without any particular styles.

Are any of you old enough to remember the 1931 Cadillac V-16 (pictured here), the 1935 Buick "Roadmaster," the 1938 Cadillac "60 Special," or the 1939 La Salle? They were instantly recognizable and great to look at.

At age ten I knew them all by make, model, and year. In some cases, even by sound.

But now – at least for me – a new car has all the charm of a refrigerator.

PETER HEWITT is a former resident of Dublin who retired to RiverMead along with several other Dublin residents.

Young Artist Call from SAC

Juried Exhibition open to artists 30 and younger.

The Sharon Arts Center (SAC) is sending out a Call to Artists under 30 for a juried art exhibition that will open on March 3, 2012 and run through April 28, 2012.

A \$500 award for Best in Show will be given, along with two Honorable Mentions awards. To be eligible, the artist's birthday cannot come before May 1, 1981, and he or she must be out of high school. Mediums under consideration include all 2D, 3D, and digital (animation, film) media.

There is an entry fee of \$15 and a submission deadline of December 31, 2011. Those selected for the exhibition will be notified by January 16, 2012.

For complete details and official application materials, email comingofage@sharonarts.org.

ADVERTISEMENT

Will Your Protection Needs Continue?

Pensions, Social Security and Savings used to ensure a comfortable retirement. No longer. Therefore, most of us have to rethink whether it is safe to let Term Life insurance expire if our needs continue past age 50 or 60, and even age 70. Permanent cash value life insurance offers many advantages, such as:

A death benefit from Day One that never expires provided premiums are paid when due. Ability to tailor the premium payment period for certain policies. Tax-deferred cash value growth. An asset to diversify your portfolio. Some policies earn dividends, although not guaranteed. A ready source of tax-free cash via policy loans.* Will not affect your credit score. Proceeds generally tax-free to your heirs or charitable legacies.

* Accessing the cash value via policy loans will decrease the death benefit and cash value, SMRU Bates 453307.



Let's see what an alternative Strategic Asset Allocation can accomplish!

Tom Blodgett, Licensed Agent
New York Life Insurance Company

800 South Street, Suite 600 • Waltham, MA 02453
603-543-7740, cell 603-547-5506

TBlodgett@ft.newyorklife.com
www.ThomasBlodgett.nylagents.com

Financial Services Professional and Registered Representative, offering securities through NYLIFE Securities LLC, Member FINRA/SIPC, A Licensed Insurance Agency

Night Line – The Saw Whet Owl

By Tom Warren

In the night sky over the Monadnock region a tiny forest owl about 8" long is migrating. However, a number of these owls remain in our region all winter.

A few facts about owls: Owls have large eyes and their vision is 2 to 3 times better than humans and can admit 3 times as much light as ours.

They can focus their eyes 10 times faster than humans so that they can see obstacles quickly.

They have asymmetrical ears (one higher than the other) and this allows them to perceive sound sooner in one ear than the other ear, as little as 3/100,000 of a second which means that they can locate sound with remarkable accuracy. It is with their ears, not their eyes, that allows them to capture much of their prey, which occurs mostly in the dark. Their large facial disk also aids in the amplification of sound.

Female owls are 40% heavier than males.

The Saw Whet Owl, the smallest of our owls in this area has long, broad wings with a wingspan of 17-21 inches and relatively light wing loading, which allows it to fly through heavy shrubs and trees. Wing loading is the amount of body weight supported by a small area of the wing.

The Saw Whet Owl nests in holes in trees, usually those cavities made from Flickers and Pileated Woodpeckers. They will also nest in bird boxes. Between the months of March and July, the female lays 5-6 eggs, which will hatch in 28 days. In another 30 days the young leave the nest cavity.

These owls eat a large number of mice, voles, red squirrels as well as small numbers of birds during migration. They eat their own weight in mice every 3-4 days.

They have nine different vocalizations with the most common being a whistled toot note, which can be used to call them out of the forest on fall and winter nights. They also make loud, sharp squeaking calls



that sound like a farmer or forester filing a large mill saw. It gets its name from this call note.

On several occasions I have been able to call this owl from the forest by mimicking its call note. On two occasions, the owl picked my woolen hat from my head before realizing it was not a mouse or that I was the "other" owl.

The Saw Whet Owl has been the subject of one of the major banding projects by Antioch graduate student, Chris Volonte. Her research the past three years has revealed that hundreds of these owls are migrating through our region in October and November.

TOM WARREN, a Dublin resident, is a Trustee of the Harris Center for Conservation Education and New Hampshire Audubon.

Something New from The Advocate

The Dublin Advocate is getting ready to be online in a new format. We will still keep bringing you the same great Advocate you look forward to reading every month, but soon the articles will also be on a blog, called Dublin Advocate.

When it is up and running, you can simply go to DublinAdvocate.com, click on the "send email" button, verify it from your own email inbox, and you will get a monthly reminder with a link when the issue is fully published online. Kick-off date of early 2012.

Looking ahead, this move may enable us to cut our issues shorter, saving money, time and paper; it will allow important messages to be sent if you approve that as an option; and soon we will be taking advertisements in the effort to have the blog support itself.

But best of all, this will invite the next generation to have more of a voice in our town.



Fletcher Wilson, M.D. (left), Pamela Stetzer, M.D. and David R. Levene, M.D., surrounded by the cast of MCH babies

We Love Our Babies

At Monadnock Community Hospital, we love our babies and also love to baby our pregnant moms. For years, Monadnock OB/GYN and The Birthing Center have been recognized as one of the best maternity departments in the country. New moms will experience one of the most family-centered and highly supportive environments before, during and after childbirth of any hospital, large or small.

At The Birthing Center, you can expect:

- Comfortable, attractive rooms for your entire childbirth experience
- Personal, one-to-one nursing care during labor
- Safe, secure and calm surroundings
- A complete range of options, including natural childbirth, water labor, water birth, pain medication and epidurals

Monadnock OB/GYN

Monadnock OB/GYN Associates, PA
Office visits in the following locations
Peterborough • Keene
For an appointment, call 924-9444

Monadnock Community Hospital
The Birthing Center

www.monadnockhospital.org
452 Old Street Rd., Peterborough, NH

Monadnock Community Hospital is a not-for-profit health care provider offering comprehensive health care services to the Monadnock Region. Financial Assistance information is available upon request.

DECEMBER 2011 — TOWN EVENTS

SUNDAY	MONDAY	TUESDAY	WEDNESDAY	THURSDAY	FRIDAY	SATURDAY
BOS Board of Selectmen DCA Dublin Christian Academy DCC Dublin Community Church DCS Dublin Consolidated School	DGS Dublin General Store DHS Dublin Historical Society DPL Dublin Public Library DS Dublin School DWC Dublin Women's Club TH Town Hall			1 DPL Holiday Program for Friends & Families 5-7 pm	2 Christmas Tree Lighting 6:30 pm, Fire Dept./Yankee parking lot	3
4 DPL Beech Hill Hike 10 am-1 pm	5 TH BOS 4 pm	6 DPL Hill Top Grp 6:45 pm	7 DPL Story Time 9:30 am; DCC Two Hat Grp., 7:30 pm	8 DCA School Play <i>The Mikado</i> , 1 pm	9 DCC Nowell Sing We Clear 8 pm; DCA School Play <i>The Mikado</i> , 7 pm; Animaterra, UCC, Peterborough, 7:30 pm	10 Animaterra, Baptist Church, 7:30 pm
11 Fairwood Bible Chapel, Christmas Dessert Banquet 6:30 pm	12 TH BOS 4 pm	13 DPL Hill Top Grp 6:45 pm;	14 DPL Story Time 9:30 am; TH La Leche League 7 pm; DCC Two Hat Grp 7:30 pm	15 DPL Trout Unlimited 6 pm; Deadline for January <i>Advocate</i>	16 DCA Christmas Vespers 1:30 pm	17
18	19 TH BOS 4 pm	20 DCS Winter Concert 6 pm; DPL Hill Top Grp. 6:45 pm	21 DPL Story Time 9:30 am; DCC Two Hat Grp 7:30 pm	22	23	24 Fairwood Bible Chapel, Evening Service 6 pm; DCC Christmas Eve Service, 7 pm
25 CHRISTMAS	26 Library Closed	27 DPL Hill Top Grp 6:45 pm	28 DPL Story Time 9:30 am; DCC Two Hat Grp 7:30 pm	29	30	31

The **Dublin Advocate** is written by neighbors, for neighbors. Everyone is welcome to submit articles and/or photographs of interest to the community. Articles submitted are subject to edit. Email submissions to DublinAdvocate@gmail.com by the 15th of each month or, if you must, drop in the box at the Town Hall.

The **Dublin Advocate**, sponsored by the Town of Dublin, New Hampshire, is published monthly and is a registered nonprofit, and may be found at the Town of Dublin website: www.townofdublin.org

Editor: Margaret Gurney. *Staff:* Rusty Bastedo, Ramona Branch, Barbara Delphia, Mary Loftis, and Jeanne Sterling. *Production Editor:* Jill Shaffer. *Photographer:* Sally Shonk.

Please mail checks to **The Dublin Advocate**, PO Box 184, Dublin, NH 03444.

The Dublin Advocate

PO Box 184
Dublin, NH 03444

Please recycle your *Advocate* at the Post Office in the box provided so we can redistribute them around town. **Thanks.**

PRSR STD
U.S. POSTAGE PAID
DUBLIN, NH
PERMIT NO. 8

Occupant
Dublin, NH 03444